

M10 公头/母头, 面板式, 焊接型, 后锁
M10 male /female Panel mount, Solder, Rear fastened

RoHS

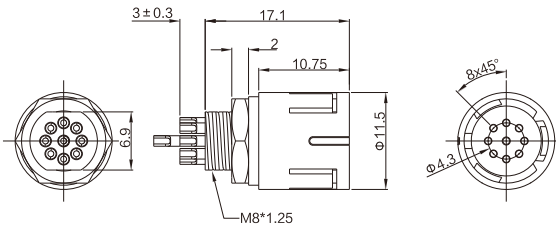
IP65



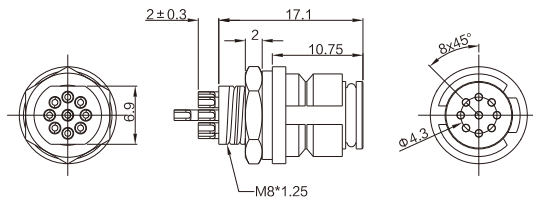
技术参数/Technical data

适用温度/Ambient temperature	-20°C ~ +80°C
胶芯材料/Connector insert	PA+GF
端子材料/Connector contacts	黄铜镀金/Brass with gold plated
螺丝/螺母材料/Connector nut/screw	黄铜镀镍/Brass with nickel plated
密封圈/O-ring	FKM
绝缘阻抗/Insulation resistance	≥20MΩ
接触阻抗/Contact resistance	≤5mΩ
是否屏蔽/Shielding or not	否/Unavailable
插拔次数/Mating endurance	>500次/Cycles

M9公头/Male molded cable

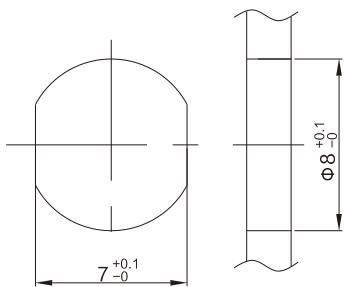


M9直头/Female molded cable



订货信息/Ordering information

芯数/Contacts	端子类型 Contacts termination	额定电流 Rated current	额定电压/Voltage		导体规格/Wire gauge		芯线绝缘 Wire insulation	公头型号/ Male model	母头型号/ Female model
			交流(A/C)	直流(D/C)	AWG	mm ²			
	焊接型 Solder version	2A	60V	72V	26	0.14	PVC/定制 PVC/ Customized	M10MAAH05P-H-0.5	M10FAAH05P-H-0.5
	焊接型 Solder version	1A	30V	30V	26	0.14	PVC/定制 PVC/ Customized	M10MAAH09P-H-0.5	M10FAAH09P-H-0.5



钻孔尺寸

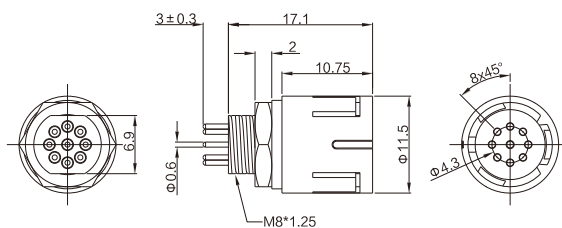
M10 公头/母头, 面板式, PCB型, 后锁
M10 male /female Panel mount, PCB Type, Rear fastened



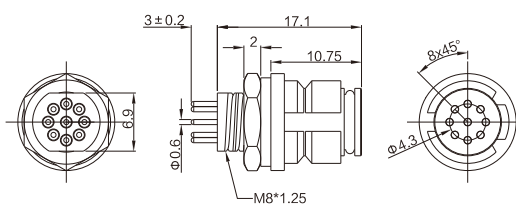
技术参数/Technical data

适用温度/Ambient temperature	-20°C ~ +80°C
胶芯材料/Connector insert	PA+GF
端子材料/Connector contacts	黄铜镀金/Brass with gold plated
螺丝/螺母材料/Connector nut/screw	黄铜镀镍/Brass with nickel plated
密封圈/O-ring	FKM
绝缘阻抗/Insulation resistance	≥20MΩ
接触阻抗/Contact resistance	≤5mΩ
是否屏蔽/Shielding or not	否/Unavailable
插拔次数/Mating endurance	>500次/Cycles

M9公头/Male molded cable

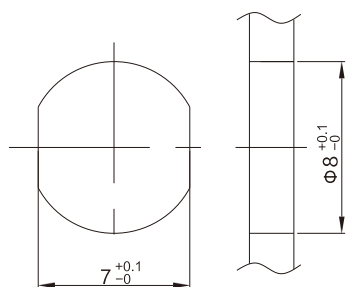


M9直头/Female molded cable

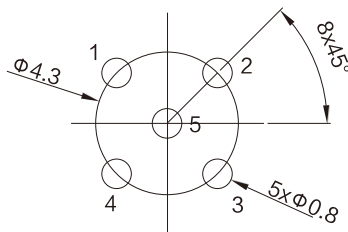


订货信息/Ordering information

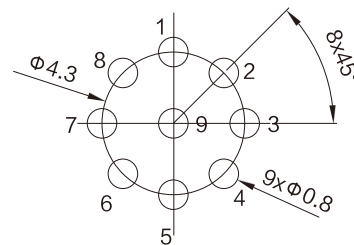
芯数/Contacts	端子类型 Contacts termination	额定电流 Rated current	额定电压/Voltage		公头型号/ Male model	母头型号/ Female model
			交流(A/C)	直流(D/C)		
	PCB型 PCB version	2A	60V	72V	M10MAAP05P-H	M10FAAP05P-H
	PCB型 PCB version	1A	30V	30V	M10MAAP09P-H	M10FAAP09P-H



钻孔尺寸



5Pins 母头



9Pins 母头